

KEY MAP
N.T.S.

A PLANNED UNIT DEVELOPMENT VALENCIA LAKES - PLAT ONE

BEING A REPLAT OF ALL OF TRACTS 42, 43, 44, 45, 46, 47, 50, 51, 52, 53, 54, 55, 74, 75, 76, 77, 78, AND 79 AND A PORTION OF TRACTS 41, 48, 49, 56, 73, 80, 81, 82, 83, 84, 85, 86, 87, AND 88 AND ASSOCIATED ABANDONED RIGHT-OF-WAY ALL IN BLOCK 58 ACCORDING TO THE PLAT OF PALM BEACH FARMS COMPANY PLAT NO. 3, AS RECORDED IN PLAT BOOK 2, PAGES 45 THROUGH 54, INCLUSIVE, OF THE PUBLIC RECORDS OF PALM BEACH COUNTY, FLORIDA. LYING IN SECTION 33, TOWNSHIP 45 SOUTH, RANGE 42 EAST.

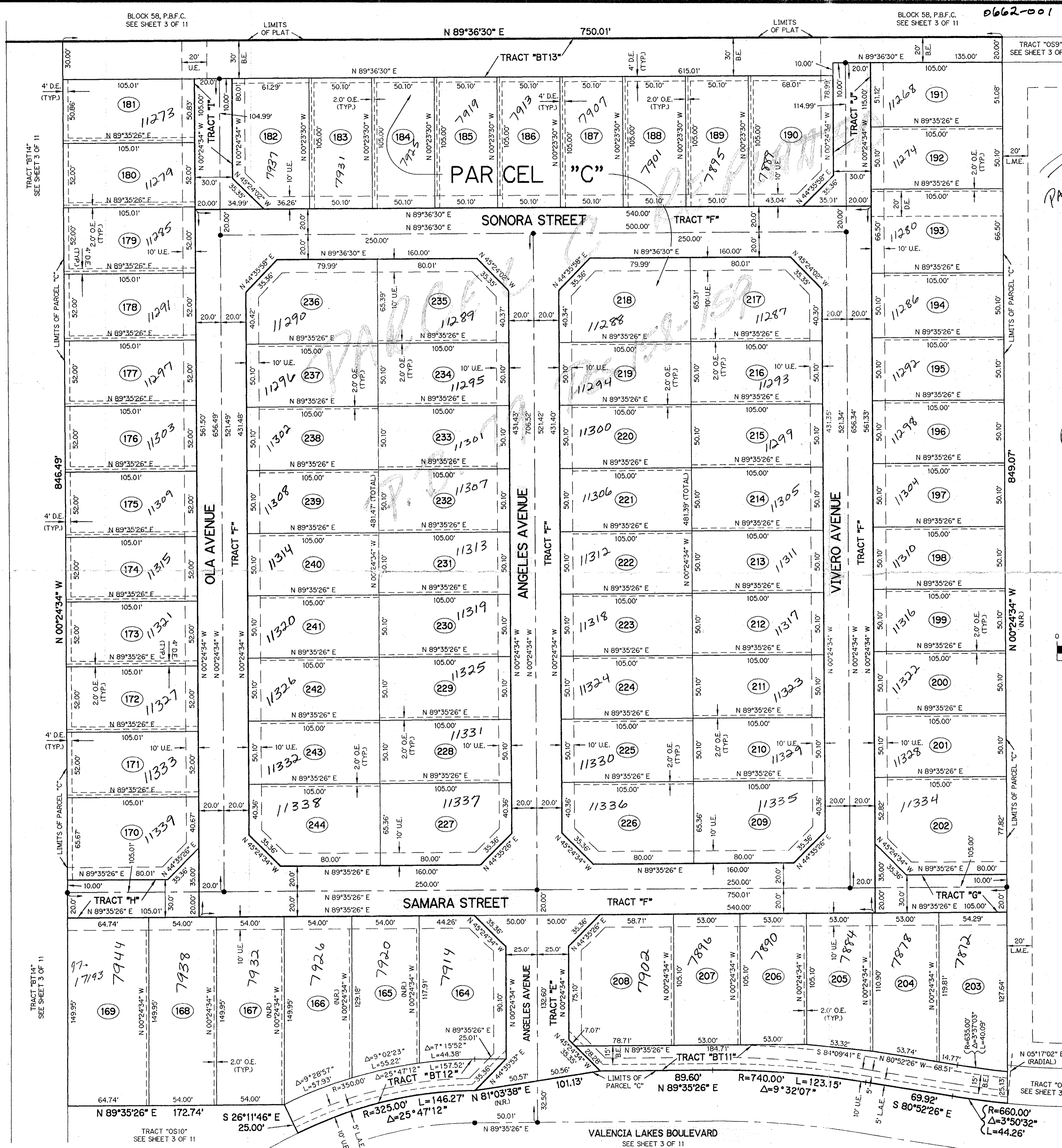
SHEET 8 OF 11 FEBRUARY, 1996

LEGEND:

- - PERMANENT REFERENCE MONUMENT, PSM #4213
- - PERMANENT CONTROL POINT, PSM #4213
- △ - DELTA ANGLE
- B.E. - BUFFER EASEMENT
- C. - CENTERLINE
- D.B. - DEED BOOK
- D.E. - DRAINAGE EASEMENT
- L. - ARC LENGTH
- L.A.E. - LIMITED ACCESS EASEMENT
- L.M.A.E. - LAKE MAINTENANCE ACCESS EASEMENT
- L.M.E. - LAKE MAINTENANCE EASEMENT
- L.W.D.D. - LAKE WORTH DRAINAGE DISTRICT
- NR - NOT RADIAL
- N.T.S. - NOT TO SCALE
- O.E. - OVERHANG EASEMENT
- O.R.B. - OFFICIAL RECORD BOOK
- P.B. - PLAT BOOK
- P.B.F.C. - PALM BEACH FARMS COMPANY PLAT NO. 3 (P.B. 2, PGS. 45-54)
- PGS. - PAGES
- P.S.M. - PROFESSIONAL SURVEYOR AND MAPPER
- R - RADIUS
- R/W - RIGHT-OF-WAY
- ST. - SURVEY TIE
- U.E. - UTILITY EASEMENT
- N 737648.0171 DENOTES STATE PLANE COORDINATES
- E 905258.2326

SUBDIVISION: Valencian Lakes
 BOOK: 78 PAGE: 20
 FLOOD ZONE: A1
 ZONING: PUD
 QUAD: 50
 SE: 95-40
 ZIP CODE: 33437
 PUD NAME: Valencian Lakes
 1/2/16

THIS INSTRUMENT PREPARED BY
 PERRY C. WHITE, P.S.M. 4213, STATE OF FLORIDA
 LAWSON, NOBLE AND WEBB, INC.
 ENGINEERS PLANNERS SURVEYORS
 WEST PALM BEACH, FLORIDA

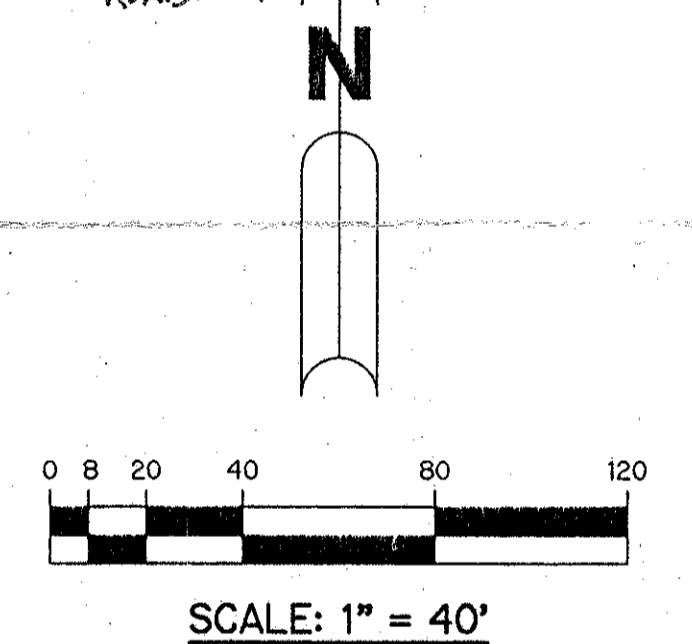


20

PARCEL C RELATED
 P.B. 79 Pgs. 158-159

TRACT "L6"
 SEE SHEET 3 OF 11

Pet 95-40
 No Schools
 Restrictive Covenant
 ROADS 1320' BEFORE 12/1/97
 5/3/13/K
 ROADS 1450' AFTER 12/1/97



TRACT "L6"
 SEE SHEET 3 OF 11

78-20

0662-001